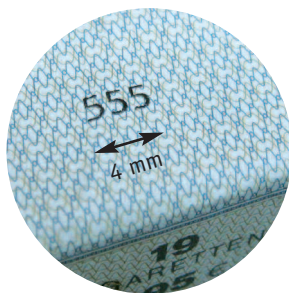
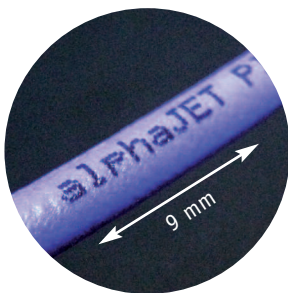


alphaJET pico Continuous InkJET system

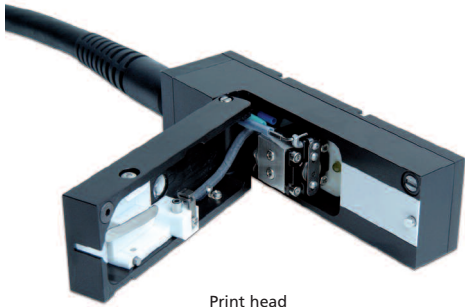


- The calligrapher for very tiny fonts with excellent readability
- Up to 5 lines
- Easy network integration
- True Type fonts
- Low-emission
- Space-saving, compact construction, IP 65 rated



... the leading manufacturer of printing, coding and marking systems

alphaJET pico Continuous InkJET system



Print head



Touchscreen control unit

alphaJET pico is a member of the proven alphaJET series and is the calligrapher for very tiny fonts with excellent readability. The uniform droplet formation ensures an especially beautiful image. The alphaJET pico is always used when you have to print a lot of information in the narrowest spaces.

Housing

- Modern Design
- IP 65 rated construction
- Operating temperatures 5° - 45°C
- Stainless steel
- Optional: UPS integrated (uninterruptible power supply)

Touchscreen display

- 10.4" TFT touchscreen display with user-friendly interface
- Resistive, detachable display, can also be tilted
- Solvent resistant
- Graphical interface (WYSIWYG)

Ink system

- Modular and easy to access
- High availability due to high quality, durable components
- Easy, timesaving maintenance
- Efficient and ecological
- No ink or solvent cartridges
- Solvent recovery system as standard

Print head

- Optimized design with head flap -> easy to clean
- Nozzle lock -> quick start and shut down routines
- Head heater -> uniform droplet formation
- Built-in strobe-light and loupe for visual inspection of the drop formation

Interfaces and I/O standard

- Ethernet
- 2 x RS 232
- 2 parallel inputs (product sensor and encoder)
- Remote socket
- Digital I/O ports
- Alarm relays
- USB
- Optional: 4-color alarm-beacon
- Optional: customer specific software

Technical data

| | | |
|----------------------|--|-------------------------|
| Dimensions: | Control unit: 320 x 320 x 700 mm (incl. operator terminal) | |
| | Print head: 40 x 40 x 145 mm (L x W x H) | |
| Print system: | Continuous ink jet system, comprising a control unit and a printing unit | |
| Ink system: | 1-litre bottles for ink and solvent, easy to change. Solvent consumption only 2 ml/h at 20°C thanks to solvent recovery system. No requirement for compressed air dye-based ink, suited to your individual requirements, depending on product material and application | |
| Ink types: | Operating temperature: +5° to +45°C, max. 90% relative air humidity, non-condensing | |
| Working conditions: | The control unit and printing unit operate independently of each other. This allows additional printing units to be controlled from one master printer. Peripheral equipment can be controlled and synchronised via defined interfaces | |
| Hardware: | Automatic time and date function, continuous numbering, barcodes, data matrix codes, logos etc.; printing of True Type fonts | |
| Text features: | Automatic diagnostics displayed in plain text | |
| Fault diagnosis: | Up to 3500 characters per second | |
| Print speed: | 3 - 10 mm | |
| Print head distance: | | |
| License: | Standard | Professional |
| Print resolution: | 24 dots | 32 dots |
| Type height: | 0.7 - 10 mm | 4 lines (5x5 matrix) |
| | | 5 lines (5x5 matrix) |
| Connected loads: | 86 - 264 V ± 10%, 50 - 60 Hz, maximum power consumption 1.0 / 0.5 A | |
| Safety standard: | Ink return control; automatic viscosity and ink level control; remote monitoring of printing errors; separation of the electronics and ink system; practically zero emissions | |

Subject to technical and design changes. E&OE

