

# KOENIG & BAUER

## alphaJET 5 HS alphaJET 5 SP

| Industrie |          |          |
|-----------|----------|----------|
| Entry     | Advanced | High-End |

Industrial top athlete - maximum performance  
Lowest running costs  
Lowest maintenance effort



we're on it.

# KOENIG & BAUER

## Table of contents

|                                       |   |
|---------------------------------------|---|
| Continuous inkjet coding              | 2 |
| Recommendation for use of CIJ systems | 2 |
| Application examples                  | 3 |
| Technical data                        | 4 |
| Quality                               | 5 |
| Contact                               | 5 |

# KOENIG & BAUER

## Continuous inkjet coding

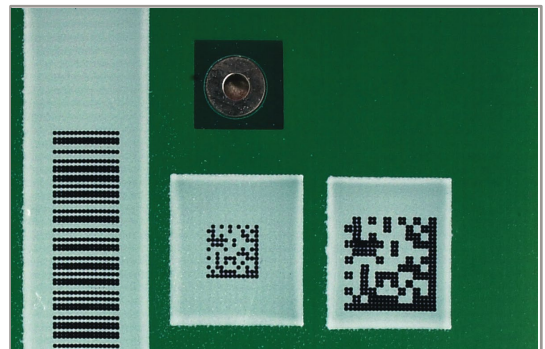
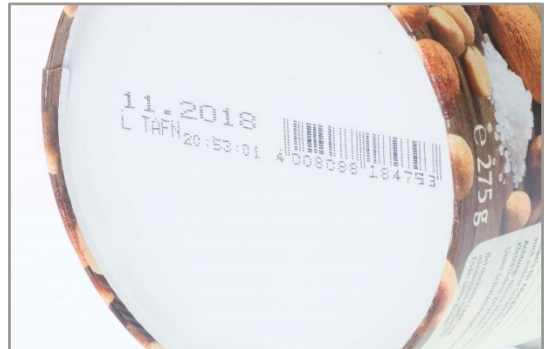
The quality of industrial coding with inkjet coding systems depends on the nature of the material (colour/coating/quality) and the ink used (pigmented / dye-containing).

## Recommendation for use of CIJ systems

| <b>Material group</b> | <b>Material</b>                   | <b>Ink</b> |
|-----------------------|-----------------------------------|------------|
| <b>Foil</b>           | Foil                              | 1039.6926  |
| <b>Wood</b>           | Wood                              | 1006.8226  |
| <b>Ceramic</b>        | Ceramic                           | 1006.8226  |
| <b>Plastics</b>       | Polypropylene (PP)                | 1040.3100  |
|                       | Low density polyethylene (LDPE)   | 1040.3587  |
|                       | Polyamide (PA)                    | 1006.8234  |
|                       | Acrylnitril-Butadien-Styrol (ABS) | 1040.0483  |
|                       | Polyethylene (PET)                | 1039.6926  |
|                       | Polyvinyl Chlorid (PVC)           | 1006.8256  |
|                       | Silicone containing plastics      | 1040.3228  |
|                       | etc.                              |            |
| <b>Metal</b>          | Coated metals                     | 1039.5171  |
|                       | Metals                            | 1040.4504  |
| <b>Paper</b>          | Paper (folded box)                | 1006.8250  |
| <b>Textile</b>        | Textilian                         | 1006.8226  |
| <b>Cable</b>          | Cable                             | 1038.8341  |
| <b>Tubes</b>          | Tubes                             | 1040.3100  |

# KOENIG & BAUER

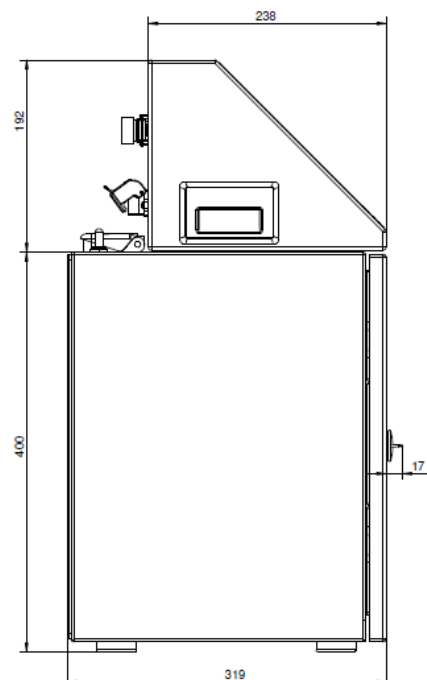
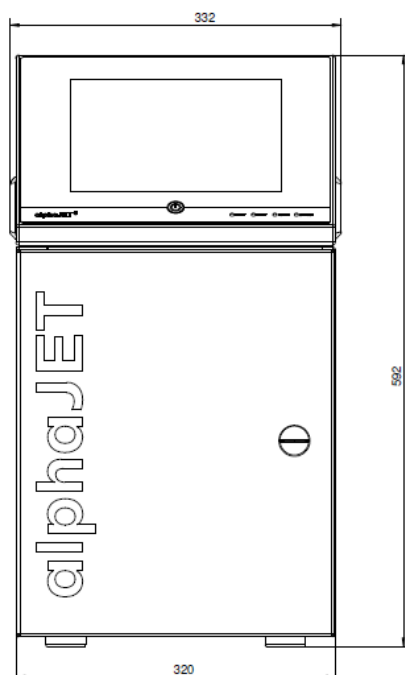
## Application examples



# KOENIG & BAUER

## Technical data

| Model                             | alphaJET 5 HS   | alphaJET 5 SP |
|-----------------------------------|---|---------------|
| <b>Nozzle sizes</b>               | 50µm  | 42µm          |
| <b>Ink Variety</b>                | Standard, High Contrast, Special  |               |
| <b>Head cable length</b>          | 4m  |               |
| <b>Dimensions printer (HxWxD)</b> | 592 x 320 x 320 mm  |               |
| <b>Dimensions head (HxWxD)</b>    | 190 x 47 x 40 mm  |               |
| <b>Housing / head weight</b>      | 23 kg / 2 kg  |               |
| <b>Print speed max.</b>           | Up to 1.300 m/min   |               |
| <b>Print speed</b>                | Up to 700 m/min with 2,5mm character width<br>(depending on size, content and material this may vary speed of coding)   |               |
| <b>Interfaces</b>                 | Ethernet, RS232, USB, alarm relay (potential free),<br>digital I/O port (8 inputs / 4 outputs),<br>2x product sensor/encoder, remote connection, optional signal pole   |               |
| <b>Solvent recovery</b>           | ReSolve ultra   |               |
| <b>Protection class</b>           | IP 65   |               |
| <b>Connection values</b>          | 110 - 230 V, ± 10 %; 1-0,5 A  |               |
| <b>Temperature range</b>          | + 5° to + 45° C; relative humidity max. 90%, non-condensing   |               |
| <b>Operation</b>                  | 10.4" touch screen glove operable; code-M software  |               |
| <b>Interfaces</b>                 | Ethernet TCP/IP, RS 232, I/O  |               |
| <b>Software</b>                   | simple text creation, automatic time and date functions, counter (freely configurable with auto-stop function), text list processing, shift marking, barcodes, data matrix codes, QR code, dot code, logos, true type fonts, Unicode, international character sets, automatic diagnosis as plain text with categorization, print preview WYSIWYG display, consumable status |               |



# KOENIG & BAUER

## Quality

ISO certification according to DIN EN ISO 9001-2015

Made in Germany.

Our quality standards include the process of continuous improvement. Design and technical changes are therefore subject to change without prior notice.

## Contact

Koenig & Bauer Coding GmbH

Benzstraße 11

97209 Veitshöchheim, Germany